

# Assembly Square

145 Middlesex Avenue, Somerville, MA 02145

Assembly Square is located off Grand Union Blvd at the intersection of I-93 and the Middlesex Fells Parkway, directly across from Assembly Row in Somerville, MA. Often called The Marketplace, Assembly Square brings together a great mix of power center retailers like Ashley HomeStore, T.J. Maxx & HomeGoods, Trader Joe's, and more to compliment the national retailers, unique shops, dining and entertainment options available at Assembly Row.



## Highlights

Middlesex  
County

Boston  
Metro Area

319,000  
Total SF

21  
Acres

1,106  
Parking Spaces

Power Center  
Center Type

## Demographics (3-Mile Radius)



458,582  
Population



192,415  
Households



\$115,173  
Median HHI



\$163,116  
Average HHI



34  
Median Age



61%  
College  
Educated

## Leasing

Liz Ryan

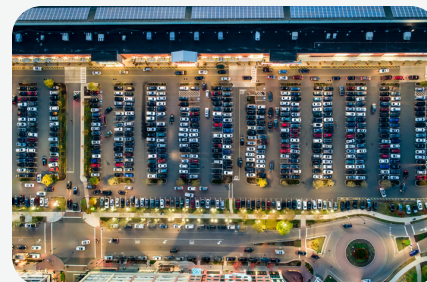
(617) 684-1508  
lryan@federalrealty.com

Stu Biel

(301) 998-8389  
sbiel@federalrealty.com

→ [federalrealty.com/assembly-square](https://www.federalrealty.com/assembly-square)

FEDERAL  
1962



# Assembly Square

145 Middlesex Avenue, Somerville, MA 02145

Liz Ryan  
 (617) 684-1508  
 lryan@federalrealty.com

Stu Biel  
 (301) 998-8389  
 sbiel@federalrealty.com



The parties acknowledge that this Plan is for identification purposes only and does not constitute any covenant, representations, or warranty by Landlord that any existing or future conditions exists, or that, if they do exist, will continue to exist through out all or any part of the lease term, except to the extent such covenant, representation or warranty is expressly set forth in the Lease.

 [federalrealty.com/assembly-square](https://federalrealty.com/assembly-square)

