

# Pentagon Row

1201 S JOYCE STREET, ARLINGTON, VA 22202









## Highlights

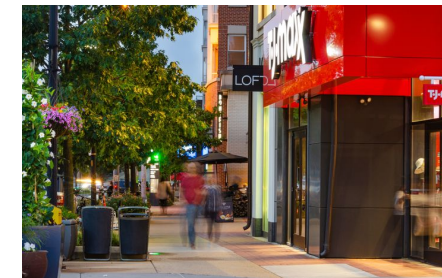
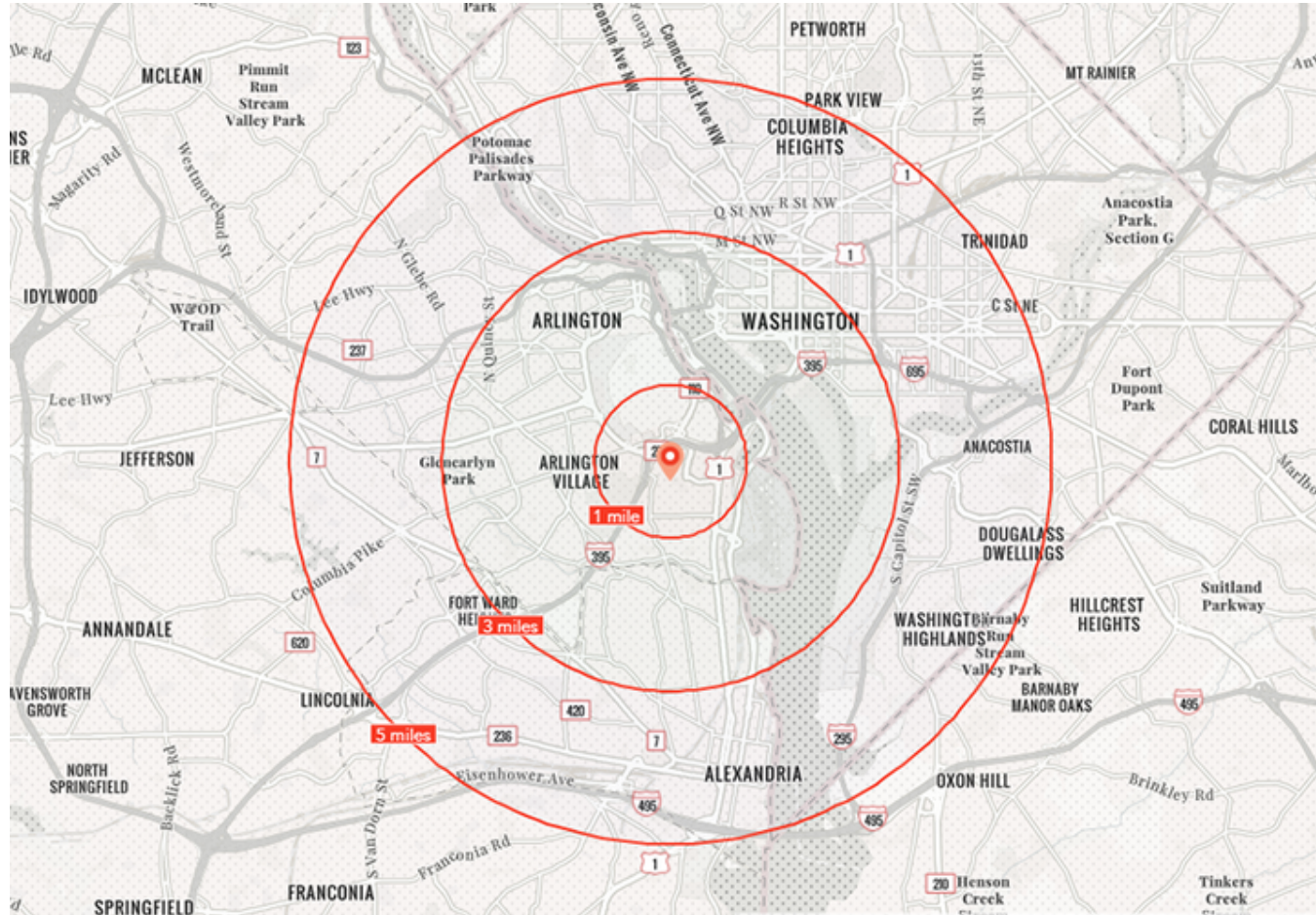
<b>COUNTY</b> Arlington	<b>METRO AREA</b> Washington, DC
<b>TOTAL SF</b> 297,000	<b>ACRES</b> 14
<b>PARKING SPACES</b> 1,078	<b>CENTER TYPE</b> Mixed Use

Located within the National Landing district and near Amazon's new headquarters campus, Pentagon Row is a vibrant shopping and entertainment destination with a unique combination of specialty retailers, exciting restaurants and amenities that include a central plaza with outdoor dining and an ice skating rink (November through March). Truly a neighborhood gathering place for the residents of more than 500 apartment homes surrounding the center.

## Demographics

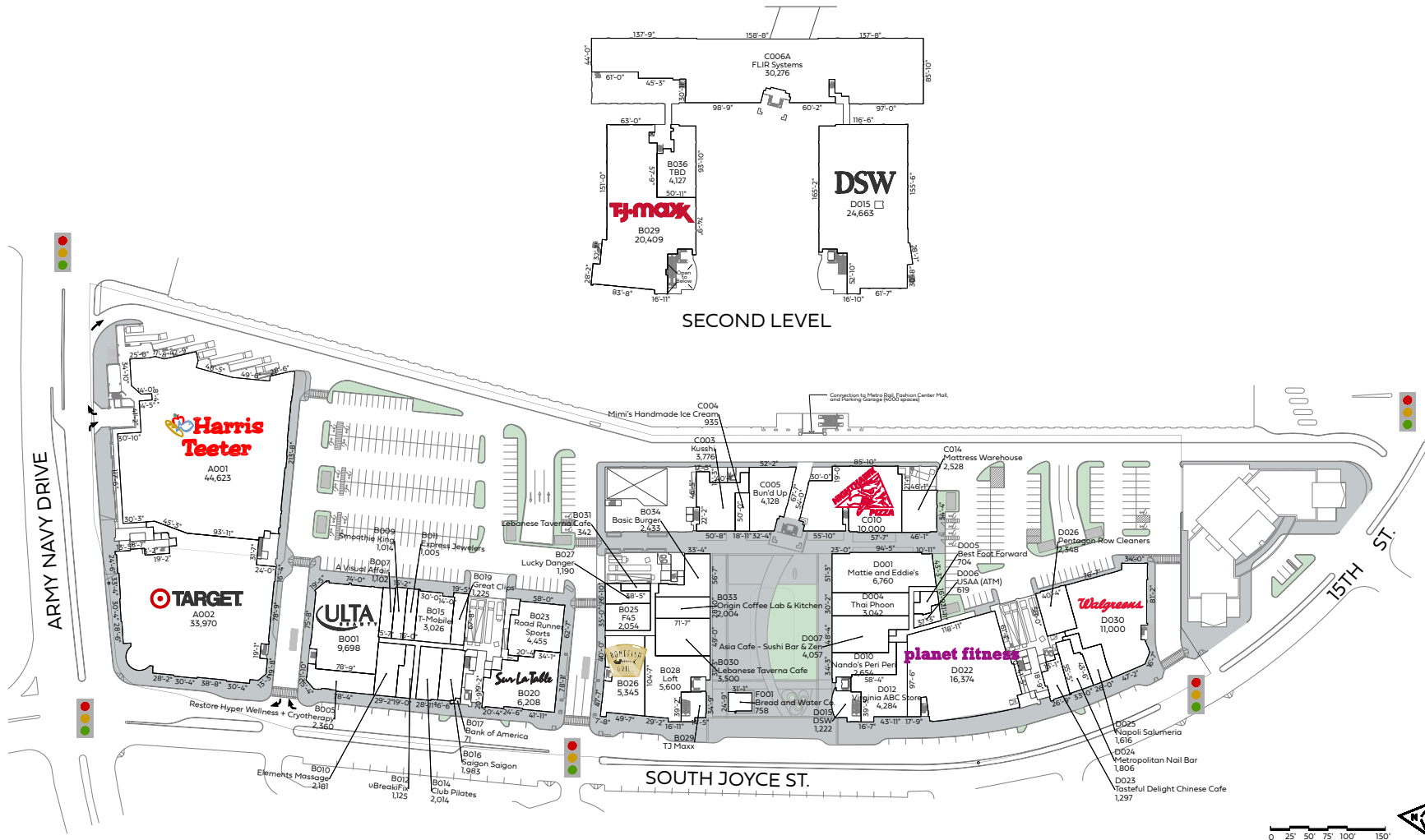
3-MILE RADIUS

 <b>493,809</b> Population	 <b>124,762</b> Households	 <b>\$114,209</b> Median HHI
 <b>\$143,042</b> Average HHI	 <b>38</b> Median Age	 <b>74%</b> College Educated



# Pentagon Row

1201 S JOYCE STREET, ARLINGTON, VA 22202



The parties acknowledge that this Plan is for identification purposes only and does not constitute any covenant, representations, or warranty by Landlord that any existing or future conditions exists, or that, if they do exist, will continue to exist through out all or any part of the lease term, except to the extent such covenant, representation or warranty is expressly set forth in the Lease.