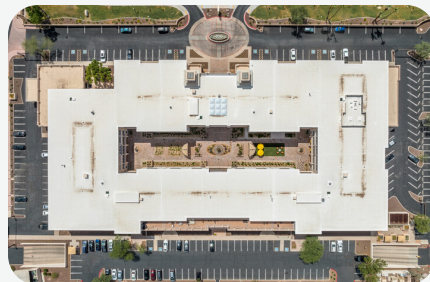


# Scottsdale Forum

6263 N Scottsdale Rd, Scottsdale, AZ 85250

With a prime Scottsdale Rd location, Scottsdale Forum leases office space to a diverse array of industry leaders in the design, finance, insurance, legal, mortgage, nutrition, real estate, and software sectors.



## Highlights

Maricopa  
County

Phoenix  
Metro Area

212,000  
Total SF

7  
Acres

200  
Parking Spaces

Office  
Center Type

## Demographics (3-Mile Radius)



65,694  
Population



34,547  
Households



\$112,798  
Median HHI



\$196,592  
Average HHI



48  
Median Age



63%  
College  
Educated

## Leasing

Zach Gaon

(310) 414-5290

zgaon@federalrealty.com

→ [federalrealty.com/scottsdale-forum](https://federalrealty.com/scottsdale-forum)

FEDERAL  
1962

